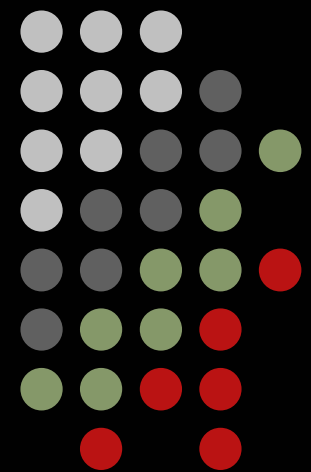
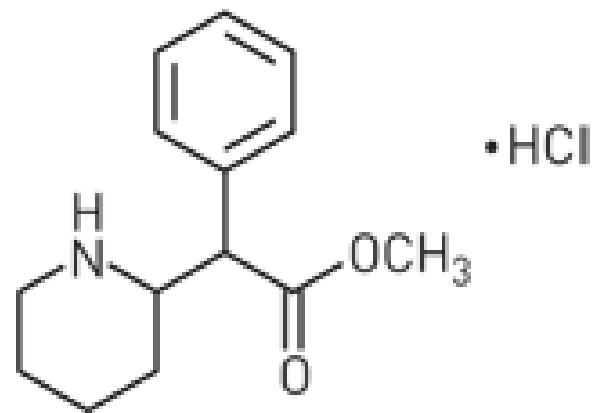


~Ritalin~



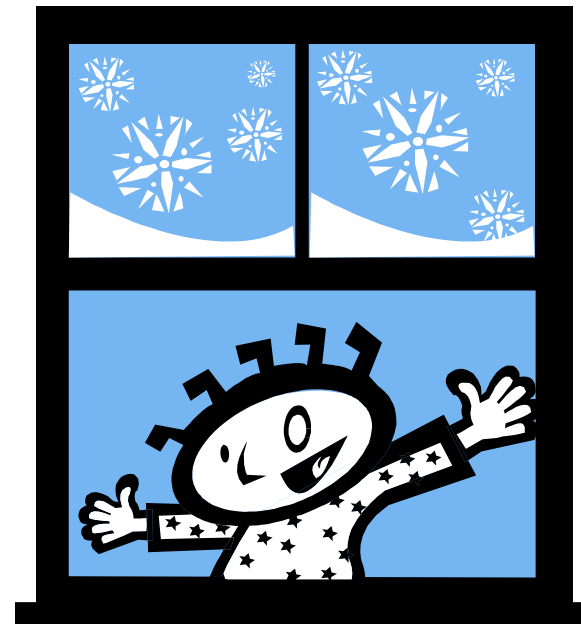
A Bit of History

- ❧ Discovered by: Ciba-Geigy Corp.
- ❧ First introduced in: 1956 as a drug for various psychological disorders
- ❧ After the patent ran out in 1967 it was then used to treat ADHD



What is ADHD?

- * A “hyper” form of ADD.
- * A person who is impulsive, hyperactive, easily distracted, and impatient.
- * ADHD is caused from low amounts of dopamine and norepinephrine, these are the transporter/re-uptake receptors in the brain.



What does Ritalin do...

- ⊙ For ADHD?
- ⊙ Ritalin helps make these levels normal again so the patient can concentrate and live a more normal life.



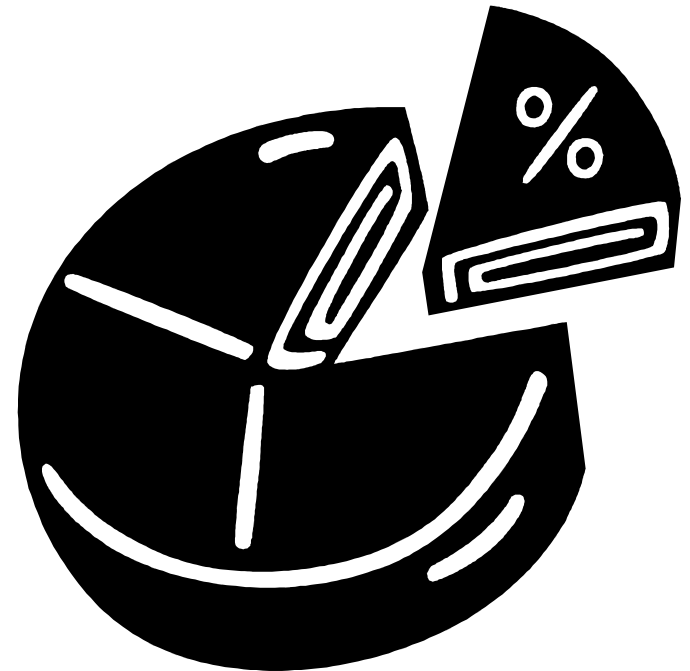
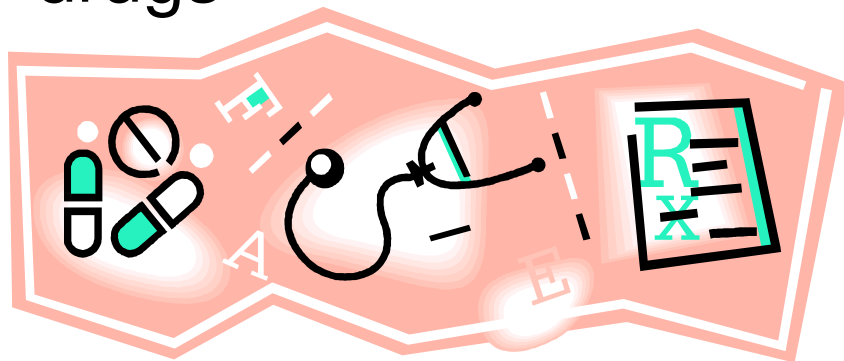
Use for any other disease?

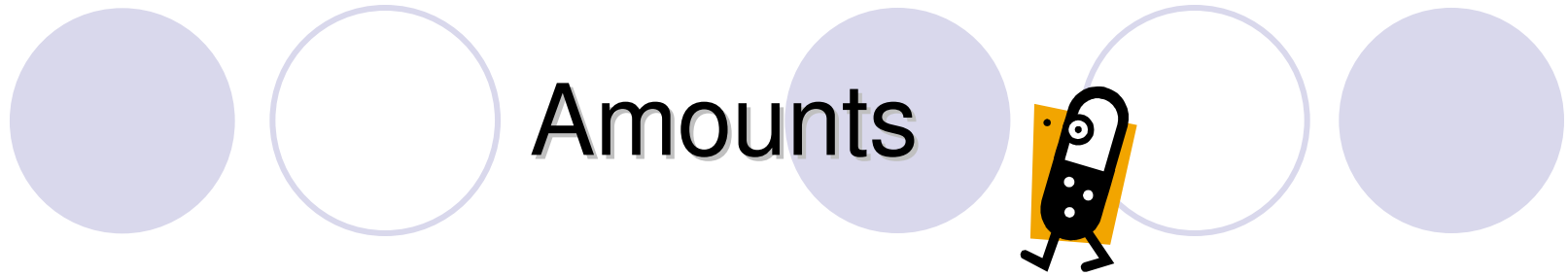
- ⌘ There have been investigations for Parkinson's Disease
- ⌘ Has been used for:
 - ~MS
 - ~Ticks
 - ~Depression



Doctors Prescribe...

- ★ 90% of patients are on Ritalin
- ★ 5% are on Ritalin w/another drug
- ★ 10% are on other drugs





- § Ritalin was first given as 5, 10, 15, and 20-mg tablets taken three times daily
- § Now there is a sustained release 20-mg and a long-acting 20, 30, or 40-mg tablet.



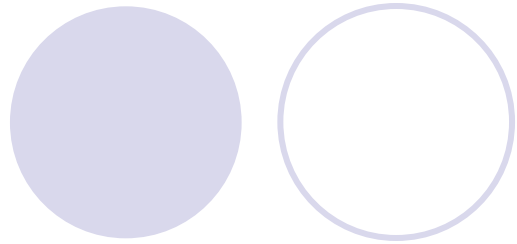


Side Effects

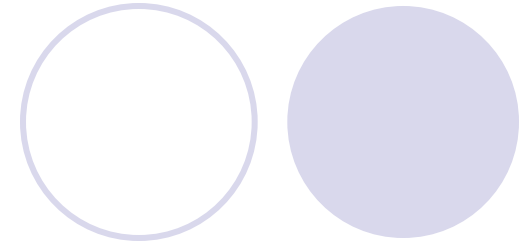
- ⌚ Increased heart rate
- ⌚ Decrease in appetite
- ⌚ Nausea
- ⌚ Dizziness

- ⌚ Can be abused by people with normal amounts of dopamine and norepinephrine





Cost

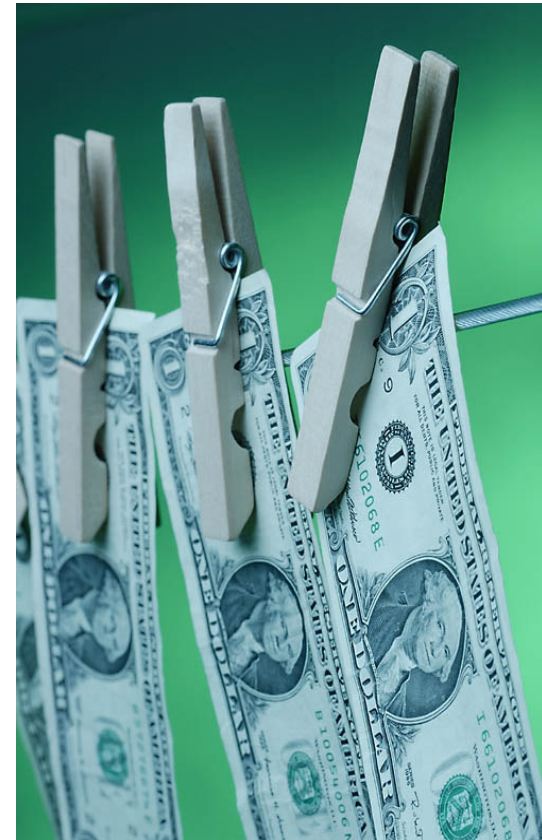


- ★ Yearly:

Approx. \$2,392
per patient

- ★ For ADHD (in general)
yearly:

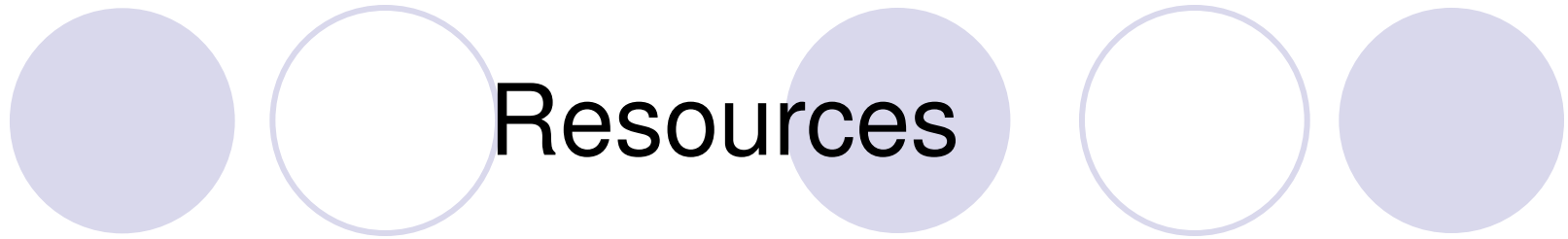
\$.53 billion for
girls and \$1.06
billion for boys





Other Names:

- ⊕ α-Phenyl-2-piperidineacetic acid methyl ester hydrochloride
- ⊕ Methylphenidate
- ⊕ CAS registry- 298-59-9



- Cen-online.org
- BioMed Central